



WELCOME

Meet the Teacher

Stage One



Meet Our Executive Team



Miss Parada
Principal



Mrs Imseih
Deputy Principal



Mrs Crawford
Assistant Principal
Learning and Support



Mrs Houghton
Assistant Principal
Curriculum and Instruction



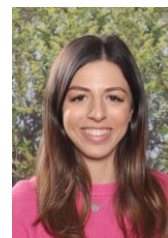
Mrs Zhang
Early Stage 1
Assistant Principal



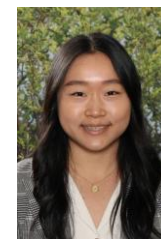
Mr McCarthy
Early Stage 1
Assistant Principal



Mr Fenech
Stage 1 Assistant
Principal



Mrs Nuzzo
Year 2
Lead Teacher



Miss Kim
Year 3
Lead Teacher



Mrs Emeleus
Stage 2 Assistant
Principal



Mr Johnston
Stage 3 Assistant
Principal



The School Day

Bell Times:

Morning: 8:45am

Recess Eating Time: 10:45am-10:55am

Recess: 10:55am-11:15am

Lunch Eating Time: 12:45pm-12:55pm

Lunch Play Time: 12:55pm-1:30pm

Afternoon: 2:45pm

Before and After School Procedures

Drop off time is 8:15-8:45am

Please do not drop your child off before this time as there is no supervision. Students will sit in lines outside the hall until the 8:45 bell.

Pick up time is 2:45pm

The COLA, hall and oval areas are used before/after school e.g. before/after school care and after school sport
No teachers on duty after school. Ensure you pick up your child on time or enrolled in after school care. Year 1 pickup is outside the school hall.



Resource List

Year 1 and Year 2 – required



Over-the-ear headphones (no bluetooth)



Paint smock



A4 lined homework book 64 pages



A4 plastic envelope folder

Year 1 (optional) and Year 2 (required)



1 small pencil case



1 30cm ruler (preferably metal or wooden)



4 lead pencils (non-mechanical)



1 eraser



1 pencil sharpener with shaving collector



1 pair scissors



2 glue sticks



Coloured pencils



Coloured textas



2 whiteboard markers



Attendance and Absences

Arriving late and leaving early

- It is very important your child is arriving at school and being picked up on time. If they are 10 minutes late each day, that's 50 minutes of lost learning time in a week (the equivalent of 1-2 lessons). If you are running late in the afternoon or unable to pick up your child, please make alternative arrangements as the teachers do not provide supervision after this time.
- Late arrivals and early pick-ups require you to sign in at the office. A slip will be given to you from the office that needs to be taken to the classroom teacher.

Absences

- Students **MUST** attend school everyday
- If your child is absent you will need to explain the absence through the Sentral app or by ringing or emailing the office
- If there appears to be a regular pattern of unjustified absences the school is under an obligation to contact the home school liaison officer.

Extended leave

- Requires a special note from the office
- Notify the school ASAP

Pick up

- If you are having someone else pick up your child please advise us through the office



TheirCare
where kids love to be!



Who is TheirCare?

- Our After School Care Facilitators
- Australian owned and operated
- A strong team that is dedicated to providing quality and engaging programs
- Community focused

Inclusive programming for all children and all age groups

- 100% of our services are either meeting or exceeding the National Quality Regulations while under our license





Communication

HAVE YOU :

Downloaded and registered for the **Sentral parent** portal app?

This is our main form of communication to families. Once you have the App downloaded, enter your access key (email us if you do not have this) and link your child. This is where you will receive notifications and or emails about activities and events at school. This is also where you enter any absences for your child, give permission for activities and excursions and view your child's report at the end of each Semester.





Communication

Facebook



- Information about upcoming events and things happening at the school.



Forms of Communication



WEBSITE



SENTRAL APP



PHONE OR EMAIL
THE OFFICE



NEWSLETTER

Email	Sentral	Phone
<ul style="list-style-type: none">• meadowbank-p.school@det.nsw.edu.au• Leave details so we can address your concerns appropriately	<ul style="list-style-type: none">• Newsletter• School reports• Whole school information• Attendance• Class organisation• Class communication• Teachers will respond within 2 days	<ul style="list-style-type: none">• 9809 3648• Organising appointments• Emergency

Uniforms

- Order uniforms online or buy second-hand.
- No jewellery, nail polish or smart watches.
- White socks
- Important to teach your child how to lace up shoes
- Ensure your child is wearing their sport uniform on Sports days, and their summer school uniform on other days

Labelling belongings

- Everything should be labelled
- Remember to relabel if needed



Girls

General
3 days a week

Summer Dress (GLSD) OR Box Pleat Shorts (Skort) (3886BP) or Summer Straight Leg Shorts (L4866) + Short Sleeve Polo (PSF21) or Long Sleeve Polo (PLF21)

Sports
2 days a week

Box Pleat Shorts (Skort) (3886BP) or Summer Straight Leg Shorts (L4866) or Gaberdine Long Pants (L4805) + Short Sleeve Polo (PSF21) or Long Sleeve Polo (PLF21)

2022 Uniform – Summer
Terms 1 and 4

Unisex

General
3 days a week

Summer Straight Leg Shorts (L4866) + Short Sleeve Polo (PSF21) or Long Sleeve Polo (PLF21)

Sports
2 days a week

Summer Sports Shorts (S7666) or Gaberdine Long Pants (L4805) + Short Sleeve Polo (PSF21) or Long Sleeve Polo (PLF21)



Lost Property

Lost property is located near the canteen below ground level



Food

Crunch & Sip

Each morning

Pack a small piece of fresh fruit or vegetables and water only. The fruit should be cut up and placed in a small container that your child can easily open/close.

Lunch

Ensure your child has a lunchbox with a handle strap so that it can be easily carried up and down the stairs. Pack your lunch with your child so they are aware what is crunch and sip, recess and lunch. Also make sure they can open their own containers and water bottles. Students should be bringing healthy foods to school (no lollies).

Canteen

Our Canteen is open Monday-Friday. Lunch orders can be made online. You can order lunch orders for your child via the following link:

<https://myschoolconnect.com.au/meadowbank>

Students are not allowed to share food or purchase canteen items for others

Make sure you put your child's correct class on the order.

Students can also purchase items from the canteen at lunchtimes.



Please do not pack crunch n sip in lunch boxes



Pack crunch n sip separately to lunch



Very hard to carry up and down stairs!



Easy to carry up and down stairs!



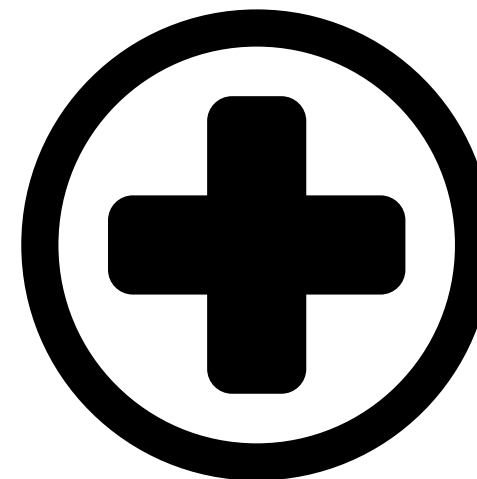
Food Continued

Allergies

We have a growing number of our students who have allergies or are anaphylactic. Whilst we do not call ourselves a nut-free school, in accordance with the policy of the Department, we would ask you to minimise the use of peanuts, tree nuts and nut products by your children whilst at school.

Birthdays/Celebrations

While we appreciate the thought please do not send food for birthdays or other celebrations. You can donate a book to the class Library on your child's behalf as an option if you like instead. We will still sing them Happy Birthday and celebrate them on the day.





Health Care Plans



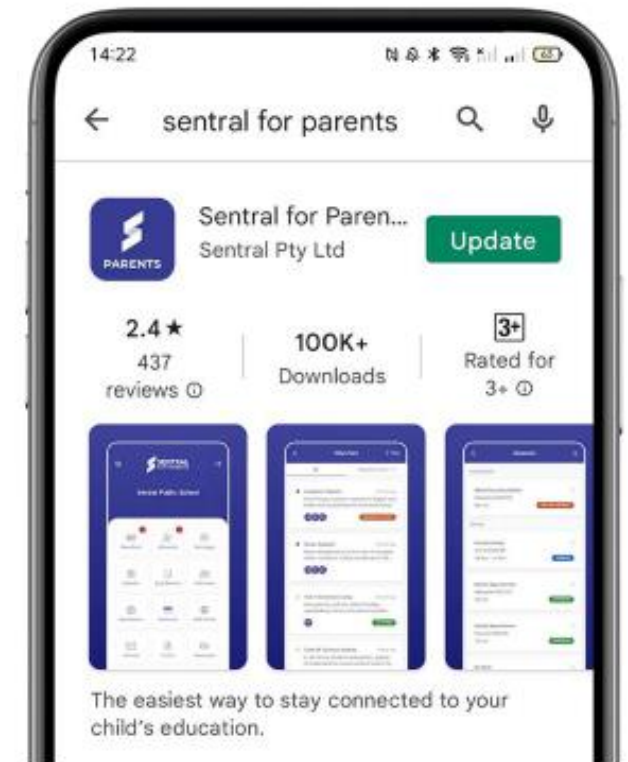
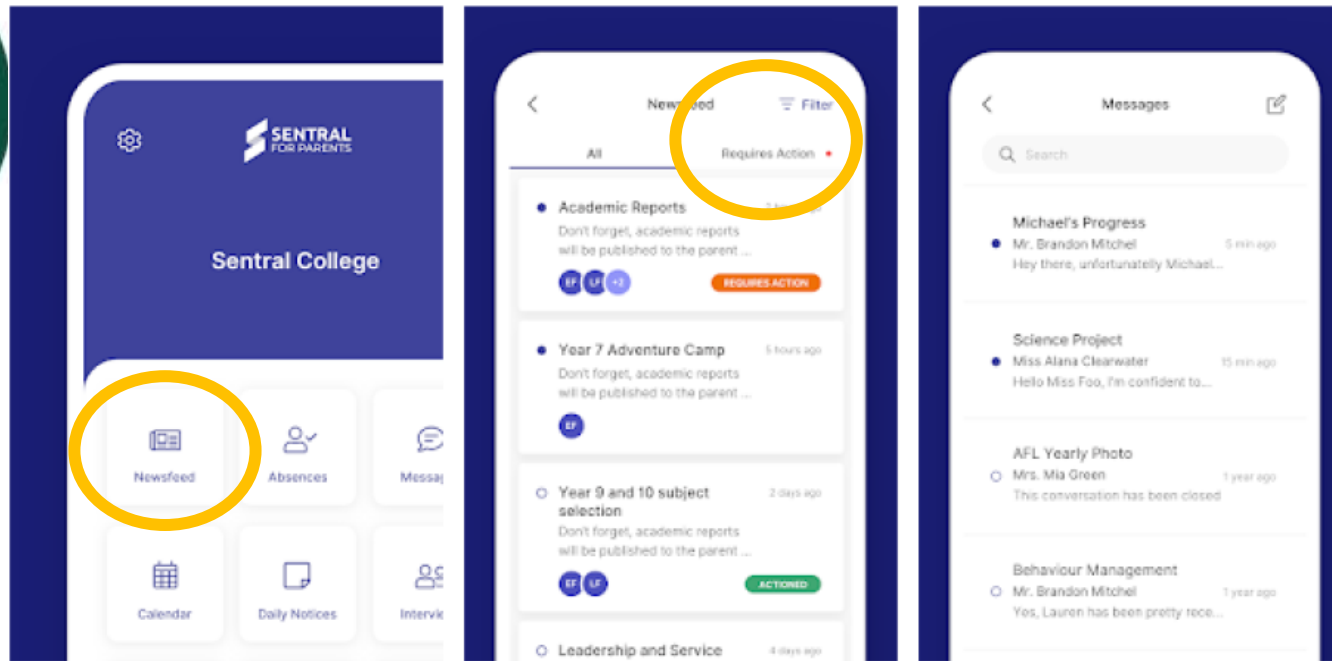
Please hand any required medication for your child to the front office, with signed documentation and accompanied by instructions from the doctor. Epipens and Asthma puffers need to be kept up to date. Health Care Plans must be completed and updated yearly. Students must not carry medication of any kind in their bags.



Notes and Payments

- Notes and money are to be posted in the black mail box on the ground level (near the library/staffroom)
- **Do not take notes and cash/payments to the front office**
- Excursions must have signed permission, even if paying online
- Permission notes must be returned on time to avoid missing out
- All payments are made through **Sentral Parent Portal.**





To give permission or make payment:

- **Download** the app.
- Click on '**Newsfeed**'
- Click on the tab, '**Requires action**'. It will show the invoice requiring payment.

App Store



Google Play





General Information Continued

Toys

- Toys/games are not to be brought to school. Students can use playground equipment as well as school equipment (basketballs, soccer balls) during recess and lunch.

Medications

- Please inform the school of any allergies or medical issues
- Medication cannot be administered at school unless it is in the **original packaging** with the **child's name** and accompanied by **written instructions from a doctor**

Eyes and Ears Check-Up

- We recommend getting your children's eyes and ears tested. Eyesight should be tested every 18 months as your child's eyes change as they grow. Hearing tests should be conducted every 5 years.



General Information Continued

Change of Details

- Please let us know if any details change throughout the year e.g. address, phone number etc.
- This can be done through the Sentral portal.

Notes

- Check your child's bag everyday for notes. Let your child know if there is a signed permission note in their bag to be returned to the post box



Communication

If you wish to speak to your child's teacher with any concerns, please make an appointment.

Contact the teacher prior to the meeting, and arrange a suitable time. Provide a brief message regarding what the meeting is about. To arrange a meeting, you can:

- Email meadowbank-p.school@det.nsw.edu.au (preferred method)
- Phone: **9809 3648** and leave a message or
- Send a note with your child



Parents and Citizens (P&C)

Our teachers, children and parents contribute every day to building a close and supportive school community. We would love to you and your child to feel at home and form lifelong friendships during your time here

We want to you come along, be involved and have a say in what happens at our school.

Having parents who take an active interest in their child's education is important both for the child's wellbeing and educational outcomes. Being part of the P&C is another way of becoming an active member of our school community.

Parents with English as a second language are especially encouraged to participate!



Class Parents Groups

One way to form strong relationships and to ease your child's transition to school is to join your "class parents" group. This is usually a WhatsApp group where parents in the same class as your child can message each other to ask questions, provide support and organise play dates and social events. It is also one way of providing feedback to the P&C.

Each class group is facilitated by one parent (the "Class Parent"). This parent organises the group chat and attends P&C meetings when they are able.

The class parent is, in turn, supported by the Social Coordinator on the P&C and a group of fellow class parents across the school. This network promotes communication and community within the school.





P&C – Get Involved in our School Community



Class parent

Fill in the information for
the Class Whatsapp

Get involved:

- Ethics
- Canteen
- Uniform shop
- Reading groups
- P & C meetings



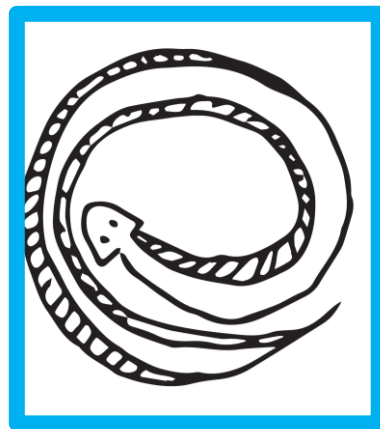
Parent Helpers

- If you would like to volunteer your time to help out in literacy groups or with school excursions, you will need to attend an induction with Ms Imseih and fill out a Working With Children's Check Volunteer Declaration.
- Please email the school to volunteer.

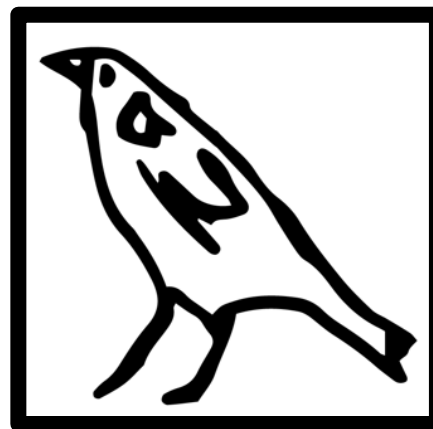
School House Groups



**Girrawi White
Cockatoo**



Burra Eel



**Dyarrawunang
Magpie**



Walu Snapper

At Meadowbank Public School each student is placed in one of four sport house groups. During sports carnivals, students represent their houses when competing, earning house points. Each house has a different colour, and students either wear the colour or their sports uniform, during our sports carnival.



School and Classroom Rules


All Settings
Safe


Walk to your destination


Report problems to a teacher immediately


Stay and play where there is supervision


All Settings
Respectful


Be an active listener


Follow teacher instructions


Always be polite and use kind words and actions


All Settings
Responsible


Care for the school environment

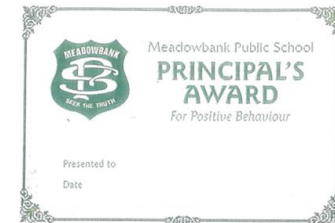
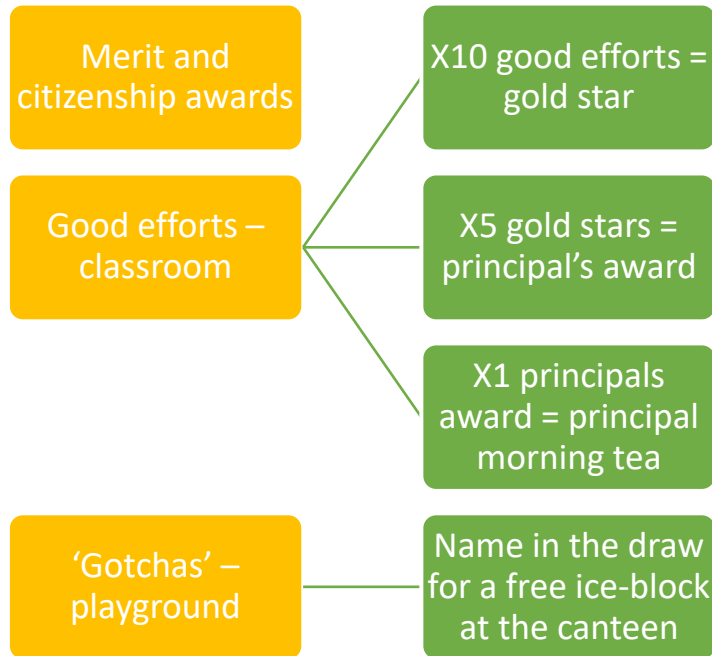

Care for own and others' property


Set a good example


Make good choices



Student Wellbeing and Award System





Management of Student Behaviour

Orange cards
classroom

Yellow cards
playground



Extra-Curricular Activities

Available

- Music lessons (information in newsletter)
- Sporting Schools (after school)
- Before school Chess coaching
- Lunchtime Garden club
- Lunchtime Chess Club
- K-2 Choir

Available to Years 3-6

- Choir
- Recorder group
- Drama
- Chess coaching
- Public speaking and debating
- Auslan Group
- Garden club
- Orchestra
- Sporting Schools



The Library



- Our library provides access to books, technology, and flexible learning areas.
- Each class comes to the library once a week to borrow books and take part in a library lesson.
- The library is open during lunch times for additional borrowing. To borrow, students must bring a library bag to school with them.
- Students with overdue library books will not be allowed to borrow until books are returned.
- The library provides a space for co-curricular activities such as chess club and chess coaching.



Miss Grassi



Mr Watts

Ms Leone

1

Our library day is Friday

2

Students must bring their library bag (labelled)

3

Only pack their library bag/books on

4

Don't confuse library books with readers.



Learning and Support Team



Alexandra Crawford

Deputy Principal/ LAST supervisor



Speech Pathology



Mrs Shannon Rosbender

- Member of our school learning support team
- Takes learning support referrals for assessment
- Available for private sessions on Tuesdays

In class support

- 1 lesson per class ½ per week
- Aligned with curriculum
- To support students of all abilities in language, understanding instructions and expressing their ideas
- Teacher professional development during this time as well



LST, EAL/D and HPGE

Learning and Support - English as an Additional Language/Dialect - High Potential and Gifted Education



Christina Kim

Learning and Support and EAL/D



Cynthia Graby

Learning and Support, EAL/D and HPGE



Lucy Jeong

Learning and Support and EAL/D



Rachael Spence

Learning and Support and EAL/D



Rochelle Keshishian

Learning and Support and EAL/D



NAP

New Arrivals program



Julia Gong
Learning and Support and NAP



Katerina Boehden
Learning and Support and NAP



Rebecca Borg
Learning and Support and NAP



Ani Bohosian
Learning and Support and NAP



LAST and EAL/D

Learning and Support – English as an Additional Language/Dialect

MiniLit and **MacqLit** withdrawal

- **Small group** literacy program

In-class support and co-teaching

- **Covers all Key Learning Areas (KLA)**





NAP

New Arrival Program

- NAP is for children who have newly arrived in Australia.
- Withdrawal group and in-class support.
- Focused on developing their English skills.





HPGE

High Potential and Gifted Education

- We provide for high potential and gifted students through a range of whole-school, classroom and extra and co-curricular opportunities.
- The model has been changed to reach more children across the four domains of high potential and giftedness:
 - Intellectual
 - Social/ emotional
 - Physical
 - Creative





HPGE

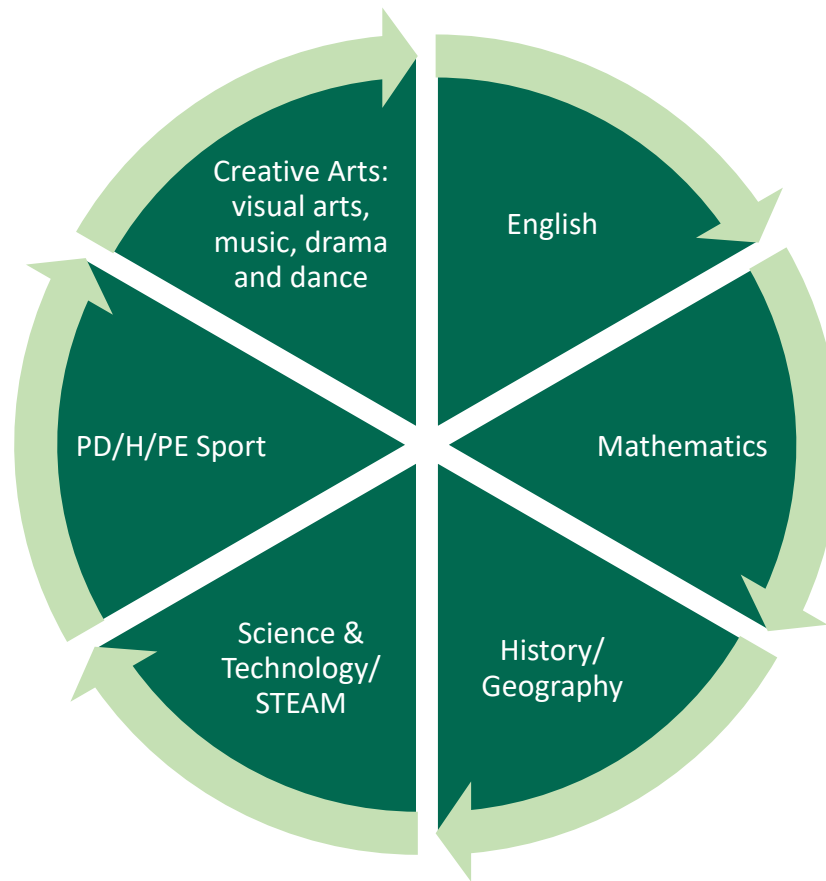
High Potential and Gifted Education

- A specialist teacher will support teaching staff in helping identified students to develop their talents
- Referrals may be made by teachers and/or parents





The Curriculum





English

Reading, Spelling, Grammar and Comprehension

Year 1/2 will be exploring and developing a wide range of skills this term through the InitialLit program. This is a phonics based program that teaches reading through the development of sounds into words. Students are then able to apply this to reading to decode information in texts.

Students will be learning to:

- spell high-frequency and common words accurately using knowledge of sounds and spelling rules
- read with increasingly fluency, accuracy and expression
- use correct grammar and punctuation to improve sentence writing
- enjoy and discuss the structure of a variety of picture storybooks

Writing

During the year, Year 1/2 will be developing or consolidating foundational skills in writing. Students will learn about the different types of sentences and how to expand them to make them more creative and interesting to read. Working with sentences can be an accessible way to begin playing with words and growing a love for writing. Students will also engage in weekly handwriting lessons to learn correct letter formation in NSW Print.

Oral Language and Communication

Students will develop their speaking and listening skills through class discussions, small group work and weekly news presentations.



Mathematics

In Mathematics this term we will be learning about:

Place Value- doubling numbers, partitioning, number patterns, teen numbers, standard and non-standard place value of numbers.

Addition and subtraction- Counting forwards and backwards, adding and subtracting numbers and using a number line

2D shapes- identifying different 2D shapes by their features

Length- measuring different lengths using informal units of measurement

Position- Giving and following directions

Students will learn new concepts each term and revise previously learnt topics.

In Year 1/2, students will use concrete materials (dice, blocks, counters etc.) to help develop their understanding of Mathematical concepts.

Physical Education

Physical Education is taught by specialist teachers and your child's classroom teacher. Please ensure that your child comes to school on sport days with a hat, drink bottle and sports uniform with appropriate footwear.



SPORT AND PE DAYS ARE
MONDAY AND WEDNESDAY



PE UNIFORM MUST BE
WORN – INCLUDING BLACK
OR WHITE JOGGERS





Homework

- .
- Homework includes:
 - Reading log: 10-15 minutes of reading per day with a parent. Reading log to be filled in by the parent and child.
 - News: 1 minute speech on the topic of the week. Students should practice at home so they are ready to present to the class.
 - Word work- Spelling words, vocabulary or handwriting activity.
 - Mathematics- related to topics learnt in class.

Developing a consistent homework routine in the primary years assists the transition to high school and higher-level study later.



Home Readers

- Students will take home 1 decodable reader and 1 non-decodable reader each week. Must be returned on Monday. They must read the decodable reader every day.
- An information sheet about the home reader program will be sent home in the first week of homework.

Decodable Reader



Non-decodable Reader





Supporting your child at home

- **Writing-** encourage your child to write in birthday cards for friends and relatives. Writing play using chalk or on scrap paper.
- **Handwriting-** Colouring in books, Lego or any activity that encourages a 'pincer grip' helps to build stamina in the small muscles in the hand.
- **Mathematics-** A packet of playing cards and dice (available from \$2 shops) are really good for using at home. Students can use the cards or dice as a random number generator for Addition and subtraction.
- **Science, History, Art:** Take your child to places like the Library, Museum or Art gallery (all free) and let them explore. Exposure to new places and experiences helps to build up a good foundation of knowledge that can be used across all learning areas at school.